

**BTEC Level 1 / 2 Tech  
Award in Health and  
Social Care**



# Could you be a superhero? Is Health and Social Care for you?

- A Superhero:-
  - Is cool in challenging circumstances.
  - Has a caring nature.
  - Is a positive role model.
  - Works hard – but no one necessarily says thank you.
  - Makes the world a better place.
  - Works well in a team as well as on their own.
  - Is courageous and brave.
  - Is good at multi tasking.
  - Can solve problems .
  - Is dedicated and determined.



**HEROES**  

SEND A  HEART TO OUR NHS HEROES





# Superheroes in Health and Social Care

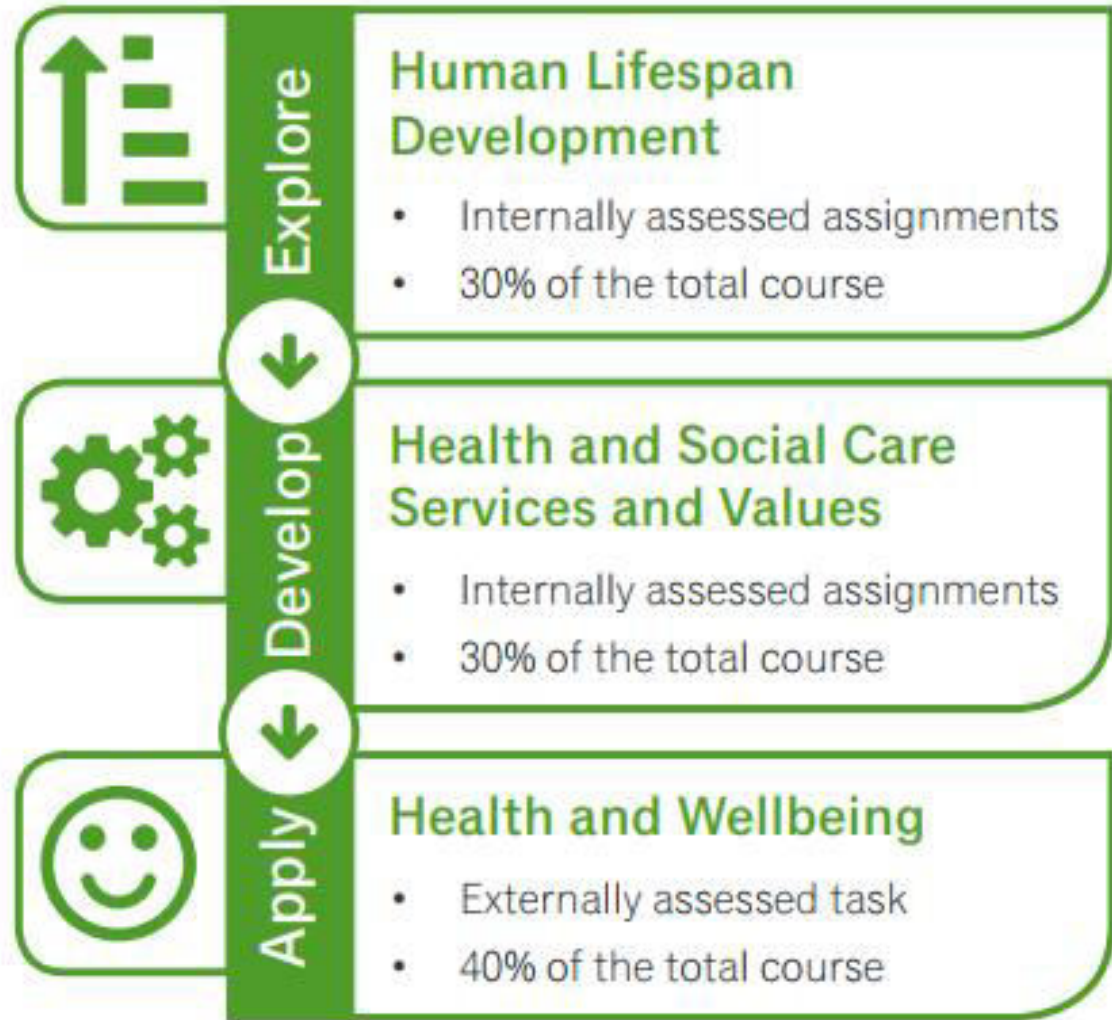


It's all about helping people.

Careers in healthcare are about helping people who are having problems with their physical health. Careers in social care are concerned with helping vulnerable people in the community and providing them with support so that they can benefit from a much more improved way of life.



# Course Content



# Component 1: Human Lifespan Development

## LA.A How we grow and develop through the life stages



## LA.B Life events



You will explore different aspects of growth and development across the life stages using the physical, intellectual, emotional and social and investigative factors that can affect individuals

Life events are expected or unexpected events that occur in an individual's life. You will explore the different events that can impact on peoples physical, intellectual, emotional and social development.





## Component 2: Health and Social Care Service and Values

**LA.A Understand the different types of health and social care services and barriers to accessing them**



**You will explore the health and social care services and why individuals may need to use them. You will also consider the barriers that may prevent people being able to access these services.**

**LA.B Demonstrate care values and review own practice**



**Through a practical role play you will demonstrate the care values that are at the core of the Health and Social Care service. You will then evaluate your performance**



# Component 3: Health and Wellbeing



Factors affecting health and wellbeing



Interpret indicators that can be used to measure health



Interpret lifestyle data in relation to risks posed to physical health.



Explore features of health and wellbeing improvement plans



Explore obstacles to implementing plans



# Post 16 Career Routes

Students who achieve this qualification can progress onto Level 3 Health and Social Care (A level equivalent) and pursue careers in the Health and Social Care sector, examples include:-

- The National Health Service (nurses, midwifery)
- Social work
- Social services
- Community care
- Allied health professionals (Physiotherapists, Occupational therapists)
- Education
- And lots more!





**You can be a superhero -  
choose Health and Social care**



*"I've learned that people will forget what you  
said, people will forget what you did, but  
people will never forget how you made  
them feel."*

**Maya Angelou**

